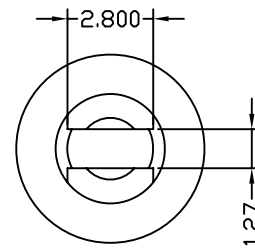
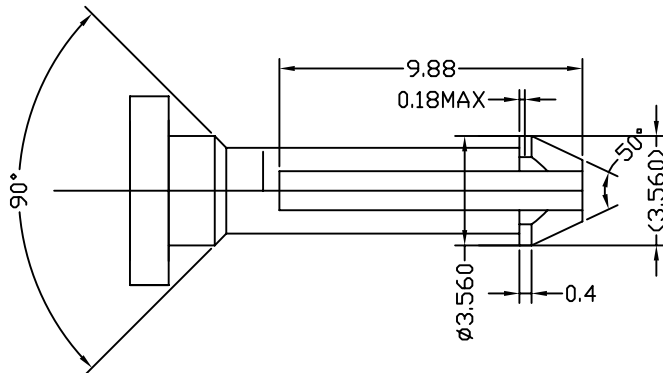
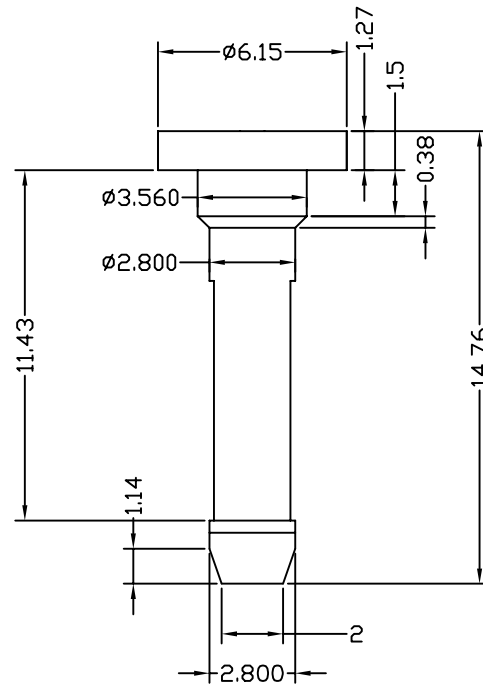
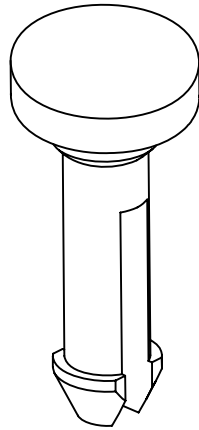



NOTICE - PROPRIETARY INFORMATION  
 THE DESIGN AND RELATED INFORMATION CONTAINED HEREIN  
 IS THE SOLE PROPERTY OF COFAN INC. THE DISCLOSURE  
 OF THIS INFORMATION DOES NOT CONSTITUTE THE RELEASE OF  
 ANY PROPRIETARY RIGHTS THEREIN. PERMISSION TO REPRODUCE  
 THIS INFORMATION OR THE PRODUCTS DISCLOSED HEREIN  
 MUST BE OBTAINED IN WRITING FROM COFAN INC.



<b>DO NOT SCALE DRAWING</b> UNLESS OTHERWISE SPECIFIED DIMENSIONS ARE IN MILLIMETER TOLERANCES ARE: 1 PLACE .X ± 0.4 2 PLACE .XX ± 0.25 3 PLACE .XXX ± 0.13 ANGLES EXCEPT 90° ± 11° MAXIMUM SURFACE ROUGHNESS 125√	DRAWING NUMBER: 50-1393		 46177 WARM SPRINGS BLVD, FREMONT CA 94539	
	MATERIAL: <b>BRASS</b>		TITLE: <b>BRASS PIN</b>	
	FINISH:		PART NUMBER: 50-1393	REV: <b>01</b>
	DRAWN BY: <b>JMJ</b>		SHEET: <b>1 OF 1</b>	DATE DRAWN: <b>6-23-2008</b>
ENGINEER:		SCALE: <b>1:1</b>		