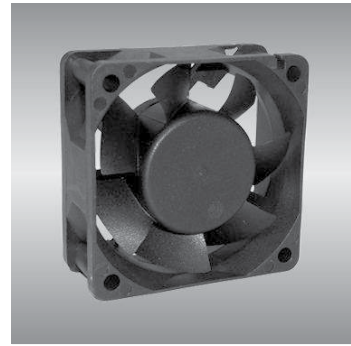


60

AGE series

60X60X25mm



● General Specification

- Material ----- Frame & Impeller : PBT (UL94V-0)
- Operation Temp. -- Two ball bearing : -10°C~70°C
Fluid bearing : -10°C~50°C
- Lead Wires ----- UL 1007 AWG#24 (2 wires) / 26 (3 wires) / 28 (4 wires)
Red Wire : + Yellow Wire : Tach signal
Black Wire : - Blue Wire : PWM control
- Weight ----- 57g

● Specification *Bearing system B:two ball bearing F:fluid bearing

Model	*Bearing System	Rated Voltage	Operating Voltage	Rated Current	Rated Speed	Maximum Air Flow	Maximum Air Pressure	Sound Level	P-Q Curve		
P/N	B / F	V	V	A	RPM	m ³ /min	CFM	mm-H ₂ O	In-H ₂ O	dB-A	No.
AGE06025 * 12J	B / F	12	7.0~13.2	0.10	3100	0.40	14.1	2.5	0.10	26	①
AGE06025 * 12L	B / F	12	7.0~13.2	0.12	3600	0.52	18.5	3.6	0.14	31	②
AGE06025 * 12M	B / F	12	7.0~13.2	0.16	4250	0.61	21.5	4.8	0.19	34	③
AGE06025 * 12H	B / F	12	7.0~13.2	0.35	5000	0.73	25.6	6.5	0.26	40	④
AGE06025 * 12U	B	12	7.0~13.2	0.40	6800	0.99	34.8	13	0.51	47	⑤
AGE06025 * 24J	B / F	24	14.0~26.4	0.06	3100	0.40	14.1	2.5	0.10	26	①
AGE06025 * 24L	B / F	24	14.0~26.4	0.08	3600	0.52	18.5	3.6	0.14	31	②
AGE06025 * 24M	B / F	24	14.0~26.4	0.11	4250	0.61	21.5	4.8	0.19	34	③
AGE06025 * 24H	B / F	24	14.0~26.4	0.20	5000	0.73	25.6	6.5	0.26	40	④
AGE06025 * 24U	B	24	14.0~26.4	0.25	6800	0.99	34.8	13	0.51	47	⑤
AGE06025 * 48J	B / F	48	28.0~56.0	0.05	3100	0.40	14.1	2.5	0.10	26	①
AGE06025 * 48L	B / F	48	28.0~56.0	0.06	3600	0.52	18.5	3.6	0.14	31	②
AGE06025 * 48M	B / F	48	28.0~56.0	0.07	4250	0.61	21.5	4.8	0.19	34	③
AGE06025 * 48H	B / F	48	28.0~56.0	0.12	5000	0.73	25.6	6.5	0.26	40	④

● Drawing & Panel Cut Outs

● Characteristic Curves

